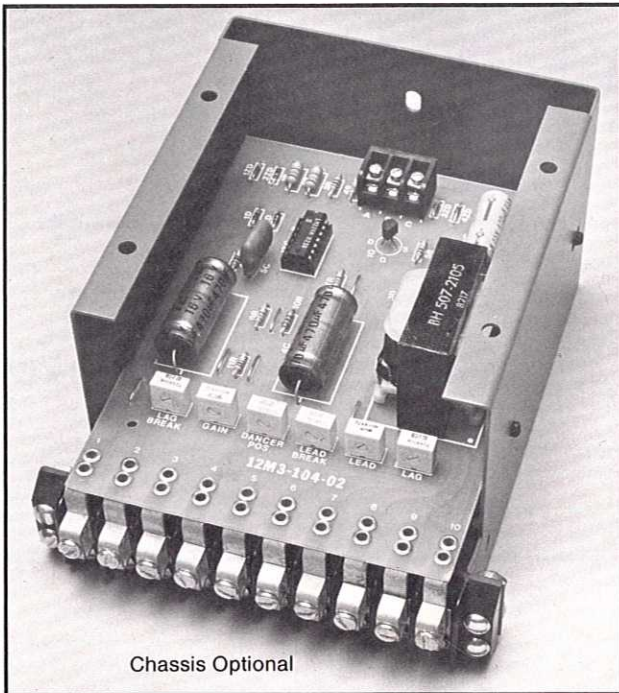


# REFLEX<sup>®</sup>

## SERIES 200 SOLID STATE CONTROLS

### MODEL 204 DANCER POSITION REGULATOR

PART NUMBER 12M03-00104



Chassis Optional

#### GENERAL DESCRIPTION

The MODEL 204 DANCER POSITION REGULATOR is used to regulate the steady-state position of a process dancer by measuring its position with a potentiometer or other position transducer and comparing this position to the desired position as selected by an on-board "Dancer Position" potentiometer.

Derivative and Integral Stability Adjustments allow the user to establish a gain-versus-frequency characteristic for stable operation over a wide range of operating conditions and with drives of most manufacturers.

Advanced circuit design insures a high level of accuracy, noise immunity and reliability in industrial environments. A field-proven mounting arrangement provides reliable connection, but allows easy removal without disturbing permanent wiring. Front access and detailed technical manual makes installation and service easy.

The MODEL 204 DANCER POSITION REGULATOR can be used with other REFLEX<sup>®</sup> SERIES 200 CONTROL MODULES and POWER CONVERTERS for smooth, stepless control in many applications. It is compatible with equipment of other manufacturers.

#### FEATURES

- COMPACT, SELF-CONTAINED
- MODERATELY PRICED
- WIDE RANGE OF ADJUSTMENT
- COMPATIBLE WITH PACKAGED DRIVES OF MOST MANUFACTURERS
- POSITIVE FRONT-ACCESS CONNECTION
- EASILY REMOVED, REPAIRED OR REPLACED
- CONSERVATIVELY RATED FOR RELIABILITY
- DETAILED TECHNICAL MANUAL

#### TYPICAL APPLICATIONS

- DC, AC AND EDDY CURRENT DRIVES
- PROCESS LINES
- WINDERS AND SPOOLERS
- UNWINDERS AND PAYOFFS

#### SPECIFICATIONS

SUPPLY: 120V AC  $\pm$ 10%  
50/60 Hz, Single Phase

AMBIENT TEMPERATURE: 0° to 40°C  
(32°-104°F) 50°C in Cabinet

INPUT: Potentiometer (1K to 50K Ohms or 0 to +6V DC)

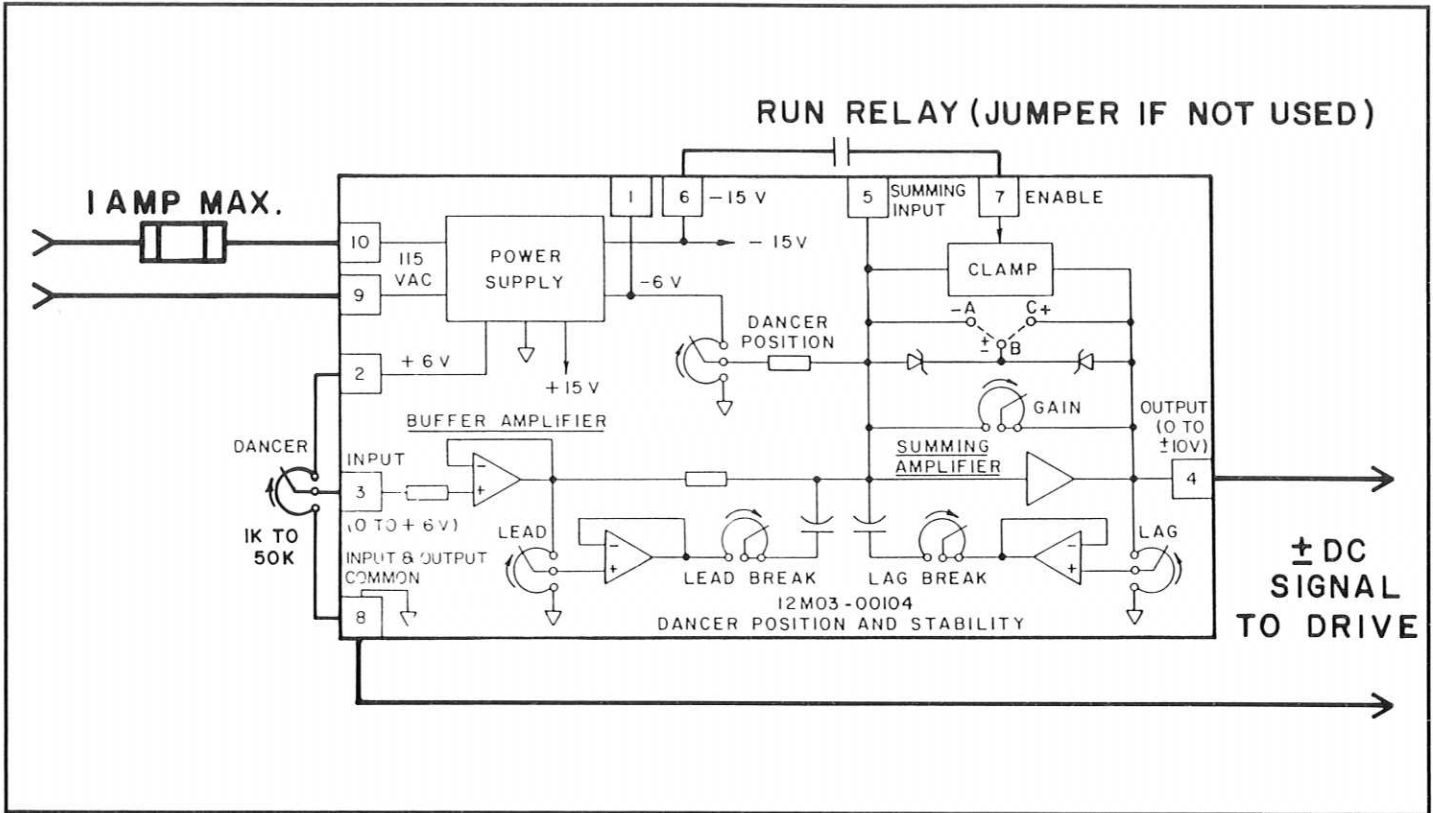
OUTPUT: 0 to  $\pm$ 10V DC @ 5mA maximum depending on position and motion of sensing element.

ADJUSTMENTS: Position, Gain, Stability

#### OPTIONS

- REMOTE POSITION ADJUSTMENT
- SHORT STROKE REACTOR
- COMPATIBLE WITH OTHER SERIES 200 CONTROLS (See Bulletin SB-200)
- SYSTEM APPLICATION DRAWINGS AVAILABLE

# REFLEX<sup>®</sup> MODEL 204 DANCER POSITION REGULATOR



**REFLEX** INC

303 ALLENS AVENUE, BOX 1515, PROVIDENCE, RI 02901  
 401/941-4444 FAX 401/941-4451 Toll Free 1-800/221-5097

SALES BULLETIN SB204-1285

Copyright © 1985 Printed in U.S.A.